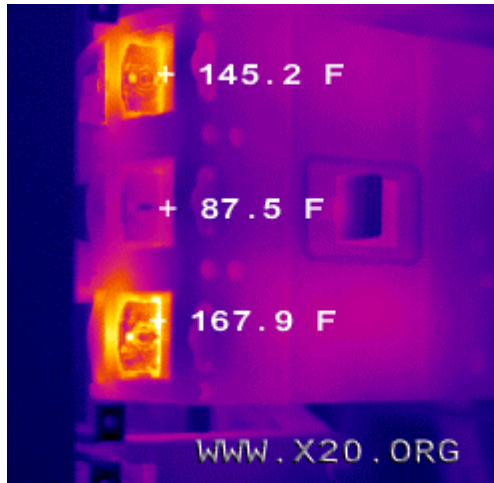




Sierra Pacific Innovations Infrared Thermographic Report

internet: www.x20.org / E-mail: sales@x20.org
 (702) 369-3966 or (805) 772-0225 / Fax (702) 369-3977

Survey #8732 / Location: GMBH southern mfg facility



Thermal image



Visual Image

Location	GMBH southern MFG operations facility
Image Date	Wednesday, August 30, 2000 9:28:11 AM
Report Date	Wednesday, August 30, 2000 11:01:07 AM
Temp Unit	Fahrenheit
Operator	Steve Drake
Location	1x BD-5B
Target	Incoming main Electrical distribution panel

Reference file name: Z:/Spi_thermogram_912883A

GPx Number: 91286Tx

IRC: TC Ultra / WL: LW / LENS: 24 deg

Data:

Label	Emissivity	Background	Average	Std Dev	Max	Min
P1	0.95	62.9	145.2 f	.	.	.
P2	0.95	62.9	87.5 f	.	.	.
P3	0.95	62.9	167.9 f	.	.	.

Comments :

- *Middle connections on component seem to be operating properly
- *Top connection is averaging 57.5 degrees f hotter than middle connection
- *Bottom connection is averaging 80.4 f hotter than middle connection