

SPI Military Infrared Systems

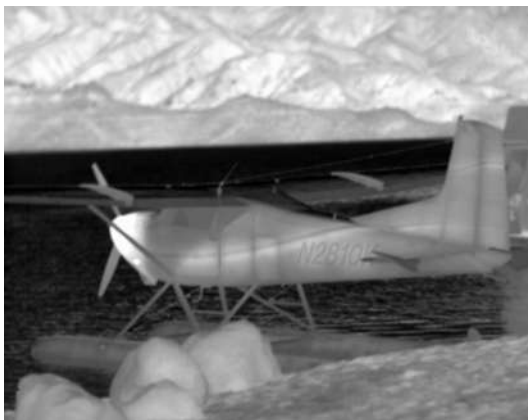
The Stealth IR sets new standards for surveillance and security thermal imagers. The system is based on the latest generation 320x240 Microbolometer Focal Plane Array Technology. This sensor produces remarkably clear and detailed imagery without the need for noisy maintenance heavy cryo-coolers. The Stealth IR is virtually maintenance FREE. Ergonomically speaking the Stealth clearly rises above the competition. The rugged water resistant housing fits nicely in your palm. All controls are accessed via one hand operation and on screen menus. All compartments are sealed from the outside with heavy rubber O-Rings and zero tolerance construction. The professional grade eyepiece articulates a full 90 degrees allowing you maximum versatility in the field. The eyecup is light safe and only produces an image when the unit is up to your eyes.

STEALTH-IR

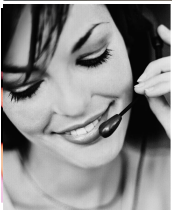


Features

- ▲ High Resolution Digital Thermal Imaging
- ▲ OnBoard removable memory for image storage
- ▲ Visible light CCD and Thermal imaging in one package
- ▲ Voice annotation of images for in the field documentation
- ▲ Serial port camera control
- ▲ Standard NTSC video output
- ▲ Digital Zoom
- ▲ Current technology ultra light Lithium Ion rechargeable batteries



Contact Information



Call SPI Corp today to discuss your options

PH: 702-369-3966 x205 FAX 702-369-3977

Commercial IR - sales@x20.org Government Sales - rk@x20.org

Additional information is available at: <http://www.x20.org>

© Sierra Pacific Innovations CORP - Las Vegas, Nevada 89148



SPECIFICATIONS

Detector Type - Monolithic Vanadium Oxide Microbolometer

FPA Format - 320 x 240, 51mm square pixels

FPA fill factor - > 60%

Spectral Bandpass - 8-12mm

NETD - < 80 mk @ f/1

Frame Rate - 60 Hz

Pixel Replacement - 8 x 8 Nearest Neighbor

Dynamic Range - > 60 dB

Lens Interface - FIXED

Standard Lens - 75mm F/1.0

Weight - < 3 lbs.

Power supply - 6 VDC, RECHARGEABLE BATTERY PACK

Controls - on/off, inverse polarity, Infrared-Visible Channel, AGC On/Off, focus

Display - 640 x 480 AMD with adjustable light Safe eyepiece

Operating Temperature - 0°C to 50°C



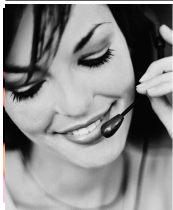
State of the Art COTS Lithium Ion Batteries can be charged in or out of the camera



Rugged sealed compartments feature Audio, Video, Serial, Power and memory card interfaces.



Contact Information



Call SPI Corp today to discuss your options

PH: 702-369-3966 205 FAX 702-369-3977

Commercial IR - sales@x20.org Government Sales - rk@x20.org

Additional information is available at: <http://www.x20.org>

© Sierra Pacific Innovations CORP - Las Vegas, Nevada 89148

