

## Robust Thermal Imaging

The IR-700 series thermal infrared imaging system is a versatile performer in the lab or out in the field. The unit is known as a workhorse in the thermal analysis world. The 700 series is the perfect camera for any stationary or portable infrared application that requires detailed color thermal imaging, temperature measurement, image storage and software analysis capability. The system has unique features like FOV zoom which allows you to adjust both the vertical and horizontal FOV to zoom in on virtually any target. SPI Corp maintains a large stock certified pre-owned infrared cameras (including the IR-700 series). These systems can provide you with a reliable consistent thermal imaging solution at a price that can be much more cost effective than a high cost new model. Contact us today to discuss your options

## IRCAM-700 SERIES



### Features

98.6+

#### Radiometric Temperature Measurement

Full Screen temperature readout is possible both in real time and during software image analysis. Range and level fully adjustable.

COLOR

#### Multiple Color Palettes

The 700 series allows you to select the best color profile for your application. Includes specialty lab palettes and a useful ISO-Therm analysis feature



#### Universal Image Storage

Easy to find inexpensive Floppy Disk image storage that is compatible with all your current computer hardware. Box of disks included.

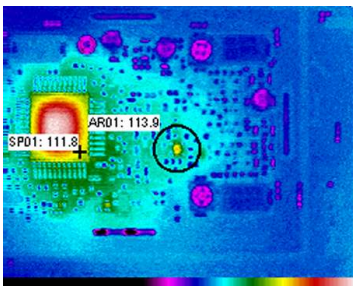


#### Unique Horizontal / Vertical Zoom

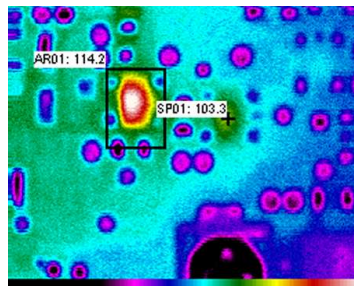
The 700 series allows you to independently control the Horizontal and vertical FOV. Great for close up PCB and distant surveillance applications.



### Applications



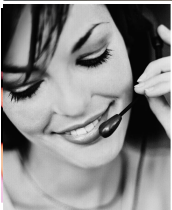
.51 x .51 Chip w/short



Extreme close up of short

- ▲ PCB Thermal Analysis
- ▲ Surveillance (long range)
- ▲ Predictive Maintenance
- ▲ R&D Thermal Analysis
- ▲ Electrical / Mechanical Inspection
- ▲ NDT Materials Analysis

### Contact Information



Call SPI Corp today to discuss your options

PH: 702-369-3966 FAX 702-369-3977

Commercial IR - sales@x20.org Government Sales - mike@x20.org  
Additional information is available at: <http://www.x20.org>

© Sierra Pacific Innovations CORP - Las Vegas, Nevada 89148



Detector	MCT (Mercury Cadmium Telluride)
FOV	15 deg. V x 20 deg. H 4x continuously adjustable Electro-Optical Zoom
Temperature Measurement Range	-20 C to +400 C (-4 F to 752 F)
Temperature Reference	Referenced internal 60hz sampled
Accuracy	+/- 2 C, +/- 2%
Background Temp Correction	YES
Emissivity Correction	YES
Min. Detectable Temp. Difference	<.10 C @ 30 C

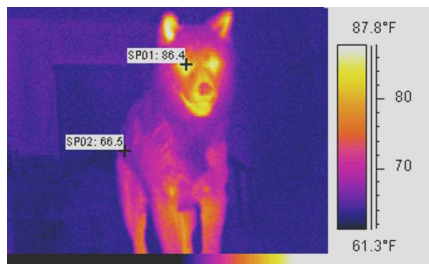
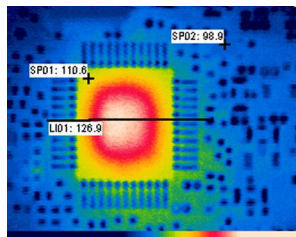
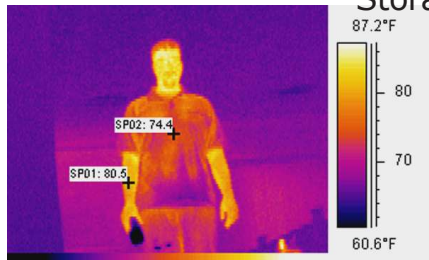


Image Storage	Digital on universal format
Video Output	RS170 EIA/NTSC 60hz
Viewfinder	Built-in, high resolution color LCD-display (TFT)



Battery Type	Rechargeable battery
Operating Time	4 Hours
Power Requirements	11-17 VDC - 30W



Operating Temp. Range	-15 C to +50C
Storage Temp. Range	-40 C to +70C

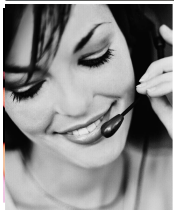


Dimensions	10 1/8" x 5" x 5 1/8" Scanner
Tripod	1/4" - 20

Voice Annotation	Up to 120 min.
Visual Imaging	>1.3 megapixel computer download

Training IR Resources LEVEL 1 CDROM

## Contact Information



Call SPI Corp today to discuss your options  
 PH: 702-369-3966 FAX 702-369-3977  
 Commercial IR - sales@x20.org Government Sales - mike@x20.org  
 Additional information is available at: <http://www.x20.org>  
 © Sierra Pacific Innovations CORP - Las Vegas, Nevada 89148

